



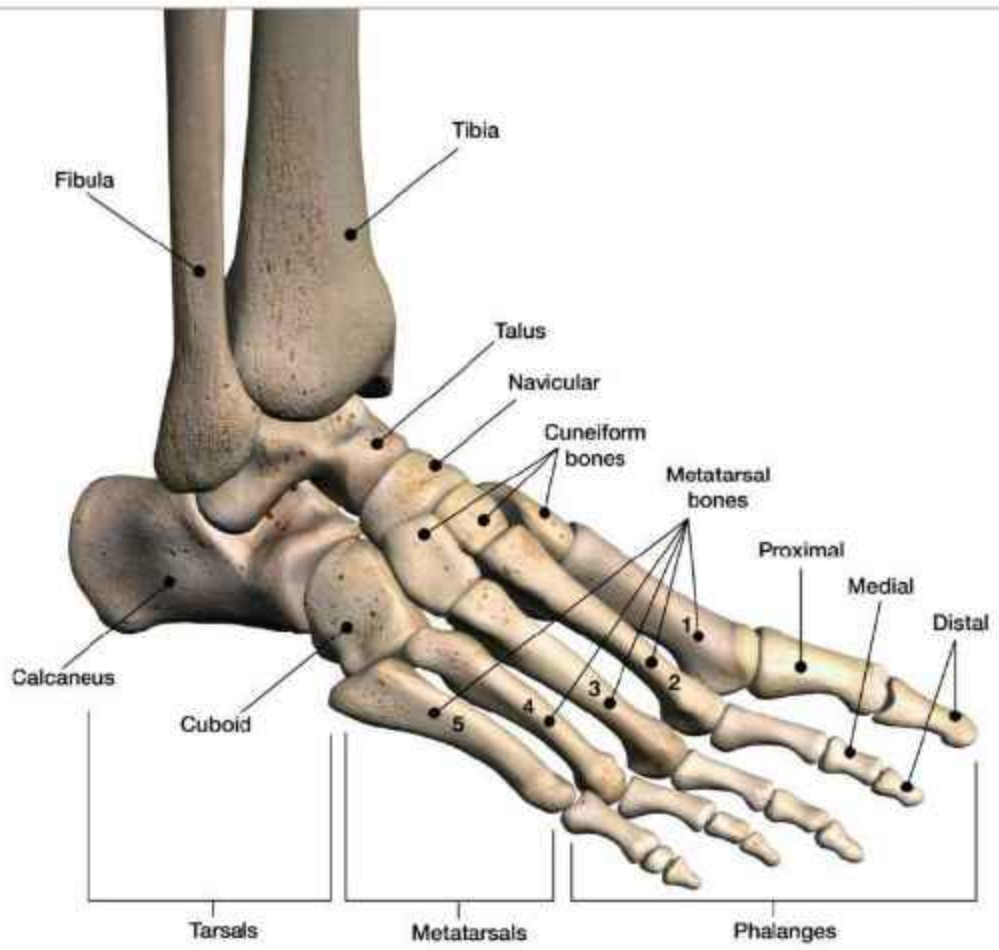
**FOOT & HAND**

2.0 / 2.4 / 2.7 MM

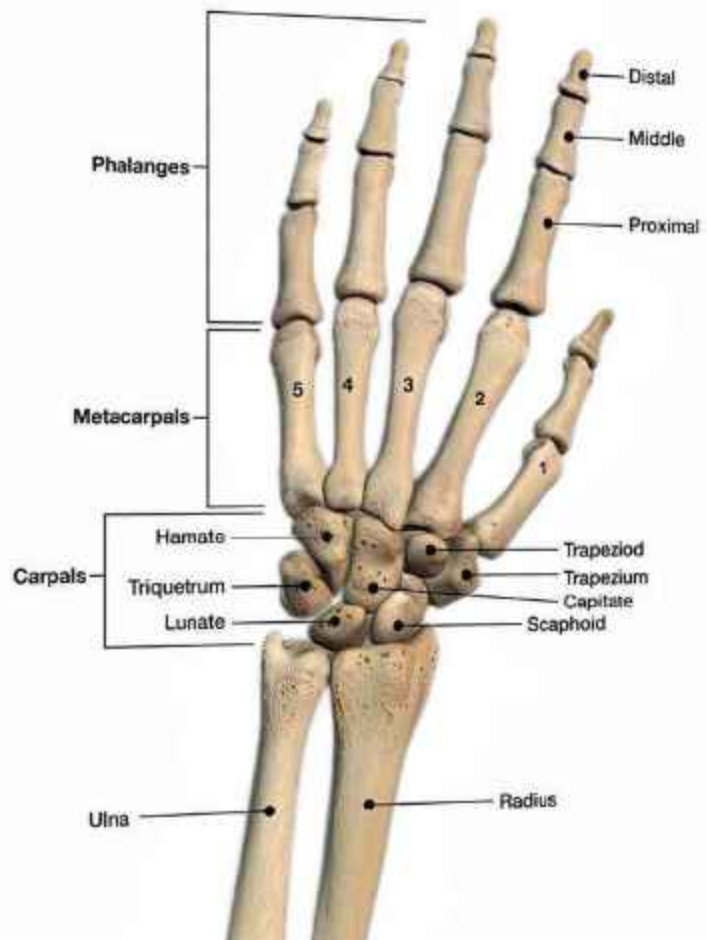


**MEDI ORTHO LIN**

Bringing Life Back To Your Bones



**HAND BONE ANATOMY**



### TIT SMALL LCP 2.0 MM

Cat. No.	Length
TL316.04	04 H
TL316.05	05 H
TL316.06	06 H
TL316.07	07 H
TL316.08	08 H



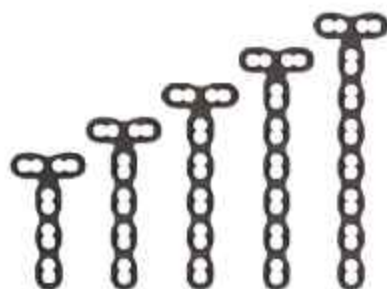
### TIT STRAIGHT LCP 2.0 MM

Cat. No.	Length
TL317.03	03 H
TL317.04	04 H
TL317.05	05 H
TL317.06	06 H
TL317.07	07 H
TL317.08	08 H



### TIT T LCP 2.0 MM (HEAD 2 H)

Cat. No.	Length
TL318.03	03 H
TL318.04	04 H
TL318.05	05 H
TL318.06	06 H
TL318.07	07 H



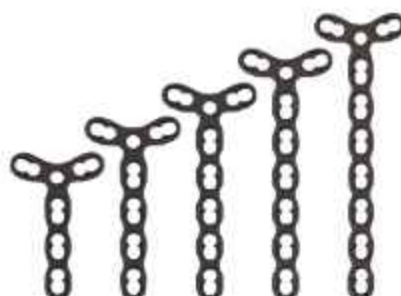
### TIT T LCP 2.0 MM (HEAD 3 H)

Cat. No.	Length
TL319.03	03 H
TL319.04	04 H
TL319.05	05 H
TL319.06	06 H
TL319.07	07 H



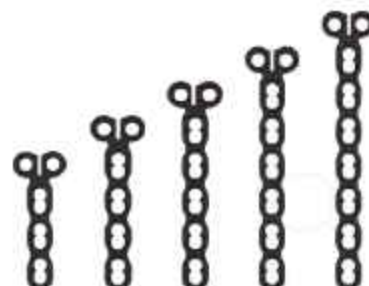
### TIT Y LCP 2.0 MM

Cat. No.	Length
TL320.03	03 H
TL320.04	04 H
TL320.05	05 H
TL320.06	06 H
TL320.07	07 H



### TIT CONDYLAR LCP 2.0 MM

Cat. No.	Length
TL321.03	03 H
TL321.04	04 H
TL321.05	05 H
TL321.06	06 H
TL321.07	07 H



### TIT ROTATION CORRECTION LCP 2.0 MM

Cat. No.	Length
TL322.04	04 H
TL322.05	05 H



### TIT 3D LCP PLATE 2.0 MM

Cat. No.	Length
TL323.L/R.06	06 H
TL323.L/R.08	08 H



### TIT LOCKING SCREW 2.0 MM (S.H.)

Cat. No.	Length
TL302.06-12	06 MM to 12 MM (1 MM VARIATION)
TL302.14-24	14 MM to 24 MM (2 MM VARIATION)



### TIT CORTICAL SCREW 2.0 MM (S.H.)

Cat. No.	Length
TL307.06-12	06 MM to 12 MM (1 MM VARIATION)
TL307.14-24	14 MM to 24 MM (2 MM VARIATION)





### TIT STRAIGHT LCP 2.4 MM

Cat. No.	Length
TL332.03	03 H
TL332.04	04 H
TL332.05	05 H
TL332.06	06 H
TL332.07	07 H
TL332.08	08 H



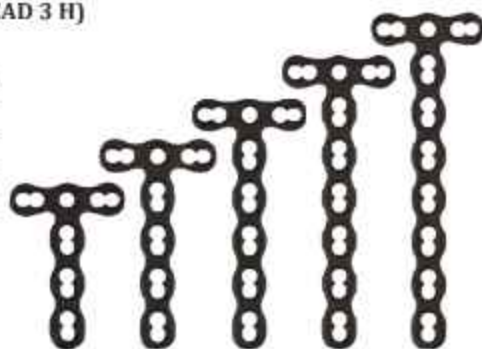
### TIT T LCP 2.4 MM (HEAD 2 H)

Cat. No.	Length
TL333.03	03 H
TL333.04	04 H
TL333.05	05 H
TL333.06	06 H
TL333.07	07 H



### TIT T LCP 2.4 MM (HEAD 3 H)

Cat. No.	Length
TL334.03	03 H
TL334.04	04 H
TL334.05	05 H
TL334.06	06 H
TL334.07	07 H



### TIT CONDYLAR LCP 2.4 MM

Cat. No.	Length
TL335.03	03 H
TL335.04	04 H
TL335.05	05 H
TL335.06	06 H
TL335.07	07 H



### TIT Y LCP 2.4 MM

Cat. No.	Length
TL336.03	03 H
TL336.04	04 H
TL336.05	05 H
TL336.06	06 H
TL336.07	07 H



### TIT LOCKING SCREW 2.4 MM (S.H.)

Cat. No.	Length
TL303.06-12	06 MM to 12 MM (1 MM VARIATION)
TL303.14-40	14 MM to 40 MM (2 MM VARIATION)



### TIT CORTICAL SCREW 2.4 MM (S.H.)

Cat. No.	Length
TL308.06-12	06 MM to 12 MM (1 MM VARIATION)
TL308.14-40	14 MM to 40 MM (2 MM VARIATION)



### TIT LOCKING SCREW 2.7 MM FOR FOOT (S.H.)

Cat. No.	Length
TL304.10-40	10 MM to 40 MM (2 MM VARIATION)



**TIT METATARSUS L LCP 2.4/2.7 MM  
LEFT & RIGHT**

Cat. No.	Length
TL351.L/R.02	02 H
TL351.L/R.03	03 H
TL351.L/R.04	04 H
TL351.L/R.05	05 H
TL351.L/R.06	06 H



**TIT METATARSUS L OBLIQUE LCP 2.4/2.7 MM  
LEFT & RIGHT**

Cat. No.	Length
TL352.L/R.02	02 H
TL352.L/R.03	03 H
TL352.L/R.04	04 H
TL352.L/R.05	05 H
TL352.L/R.06	06 H



**TIT METATARSUS T LCP (HEAD 2 H) 2.4/2.7 MM**

Cat. No.	Length
TL353.02	02 H
TL353.03	03 H
TL353.04	04 H
TL353.05	05 H
TL353.06	06 H



**TIT METATARSUS T LCP (HEAD 3 H) 2.4/2.7 MM**

Cat. No.	Length
TL354.02	02 H
TL354.03	03 H
TL354.04	04 H
TL354.05	05 H
TL354.06	06 H



**TIT CUBOID LCP 2.4/2.7 MM**

Cat. No.	Length
TL355.L	LEFT
TL355.R	RIGHT



**TIT NAVICULAR LCP 2.4/2.7 MM**

Cat. No.	Length
TL356.07	07 H



**TIT TALUS LCP 2.4/2.7 MM**

Cat. No.	Length
TL357.06	06 H



**TIT LOCKING SCREW 2.4 MM (S.H.)**

Cat. No.	Length
TL303.06-12	06 MM to 12 MM (1 MM VARIATION)
TL303.14-40	14 MM to 40 MM (2 MM VARIATION)



**TIT CORTICAL SCREW 2.4 MM (S.H.)**

Cat. No.	Length
TL308.06-12	06 MM to 12 MM (1 MM VARIATION)
TL308.14-40	14 MM to 40 MM (2 MM VARIATION)



**TIT 2 HOLE GAP LCP 2.4/2.7 MM**

Cat. No.	Length
TL359.02	02 H



**TIT LOCKING SCREW 2.7 MM FOR FOOT (S.H.)**

Cat. No.	Length
TL304.10-40	10 MM to 40 MM (2 MM VARIATION)



● GRAPHIC TRAY FOR HAND PLATE 2.0 MM

Cat No. : GB.061

No.	Cat. No.	Description	Qty.
1.	323.SQC.T06	SCREW DRIVER STAR Q.C. (A.O. TYPE) T6	2.
2.	304.04.20	Q.C. DRILL BIT 04" 2.0 MM	1.
3.	304.05.16	Q.C. DRILL BIT 05" 1.6 MM	2.
4.	325.F.20	BENDING PIN FOR LCP 2.0 MM	2.
5.	317.Q.2024	COUNTERSINK Q.C. 2.0/2.4 MM	1.
6.	305.F.20	LCP DRILL SLEEVE WITH SCALE 2.0 MM	2.



● GRAPHIC TRAY FOR FOOT & HAND PLATE 2.4/2.7 MM

Cat No. : GB.062

No.	Cat. No.	Description	Qty.
1.	323.SQC.T08	SCREW DRIVER STAR Q.C. (A.O. TYPE) T8 2.7 MM	2.
2.	304.04.24	Q.C. DRILL BIT 04" 2.4 MM	1.
3.	325.F.2427	BENDING PIN FOR LCP 2.4/2.7 MM	2.
4.	317.Q.2024	COUNTERSINK Q.C. 2.0/2.4 MM	1.
5.	305.F.24	LCP DRILL SLEEVE WITH SCALE 2.4 MM	2.
6.	304.05.18	Q.C. DRILL BIT 05" 1.8 MM	2.



● GRAPHIC TRAY FOR FOOT PLATE 2.4/2.7 MM

Cat No. : GB.063

No.	Cat. No.	Description	Qty.
1.	304.06.20	Q.C. DRILL BIT 06" 2.0 MM	2.
2.	305.F.27	LCP DRILL SLEEVE WITH SCALE 2.7 MM	2.





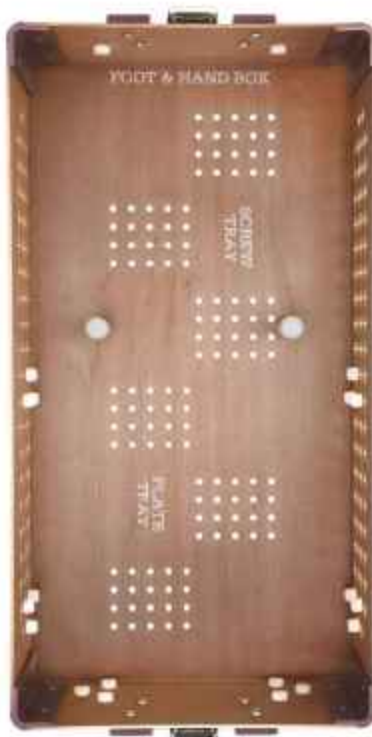
## FOOT & HAND INSTRUMENTS

No.	Cat. No.	Description	Qty.
1.	322.TH	HANDLE FOR TORQUE LIMIT ATTACHMENT Q.C.	1
2.	S808.F	REDUCTION POINTED RATCHET FOR FOOT	1
3.	322.TQC.08	TORQUE LIMIT ATTACHMENT Q.C. 0.8 N.m	1
4.	322.TQC.04	TORQUE LIMIT ATTACHMENT Q.C. 0.4 N.m	1
5.	309.U.1620	UNIVERSAL DRILL SLEEVE (1.6 X 2.0) MM	1
6.	309.U.1824	UNIVERSAL DRILL SLEEVE (1.8 X 2.4) MM	1
7.	325.N.06	PLATE BENDING PLIER FLAT-NOSED 6"	1
8.	318.U	SCREW HOLDING FORCEP UNIVERSAL	1
9.	1717	HCCS TWEEZER	1
10.	1716	HCCS DEPTH GAUGE	1
11.	315.F	HANDLE WITH Q.C.	1
12.	323.S.20	SCREW DRIVER STAR SILICON HANDLE T6 - 2.0 MM	1
13.	323.S.27	SCREW DRIVER STAR SILICON HANDLE T8 - 2.7 MM	1



## BOX FOR FOOT & HAND IMPLANT & INSTRUMENT

Cat No. : GB.060





## VA FOOT FUSION IMPLANTS & INSTRUMENTS





TIT VA X LCP 2.4/2.7 MM

Cat. No.	Length
TL358.ES	EXTRA SMALL
TL358.S	SMALL
TL358.M	MEDIUM
TL358.L	LARGE



TIT VA STRAIGHT FUSION LCP 2.4/2.7 MM

Cat. No.	Length
TL360.02	02 H
TL360.04	04 H



TIT VA L FUSION LCP 2.4/2.7 MM (LEFT & RIGHT)

Cat. No.	Length
TL361.L/R.02R	02 H (ROUND)
TL361.L/R.02C	02 H (COMBI)
TL361.L/R.04C	04 H (COMBI)



TIT VA T FUSION LCP 2.4/2.7 MM

Cat. No.	Length
TL362.02R	02 H (ROUND)
TL362.02C	02 H (COMBI)
TL362.04C	04 H (COMBI)



TIT VA CLOVERLEAF FUSION LCP 2.4/2.7 MM

Cat. No.	Length
TL363.02R	02 H (ROUND)
TL363.02C	02 H (COMBI)
TL363.04C	04 H (COMBI)



TIT VA OPEN WEDGE OSTEOTOMY LCP 2.4/2.7 MM

Cat. No.	Spacer
TL364.00	00 MM
TL364.03	03 MM
TL364.04	04 MM
TL364.05	05 MM
TL364.06	06 MM
TL364.07	07 MM



TIT VA FIRST MTP FUSION LCP 2.4/2.7 MM (LEFT & RIGHT)

Cat. No.	Length	Angle
TL365.L/R.S0	SMALL	0°
TL365.L/R.S5	SMALL	5°
TL365.L/R.S10	SMALL	10°
TL365.L/R.M0	MEDIUM	0°
TL365.L/R.M5	MEDIUM	5°
TL365.L/R.M10	MEDIUM	10°
TL365.L/R.L5	LARGE	5°
TL365.L/R.R0	REVISION	0°



**TIT VA FIRST TMT FUSION LCP 2.4/2.7 MM**

Cat. No.	Length
TL366.S	STANDARD
TL366.L	LONG



**TIT VA TMT FUSION LCP 2.4/2.7 MM**

Cat. No.	Length
TL367.02	02 H

**TIT CORTICAL SCREW 2.4 MM (S.H.)**

Cat. No.	Length
TL308,06-12	06 MM to 12 MM (1 MM VARIATION)
TL308,14-40	14 MM to 40 MM (2 MM VARIATION)

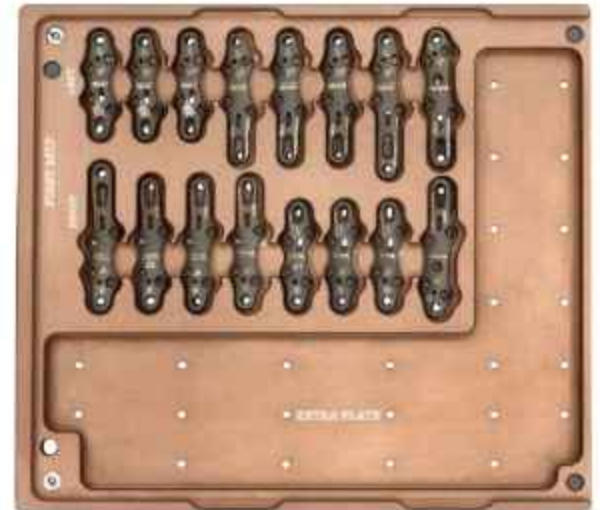
**TIT VA LOCKING SCREW 2.4 MM (S.H.)**

Cat. No.	Length
TL303.V.12-40	12 MM to 40 MM (2 MM VARIATION)



**GRAPHIC TRAY FOR VA FOOT FUSION PLATE - A 2.4 MM (VA FIRST MTP)**

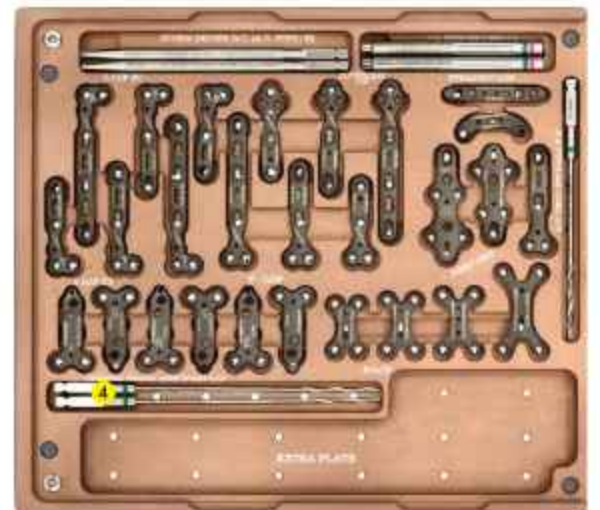
Cat No. : GB.066



**GRAPHIC TRAY FOR VA FOOT FUSION PLATE - B 2.4 MM (FOR FOOT FUSION)**

Cat No. : GB.067

No.	Cat. No.	Description	Qty.
1.	323.SQC.T8	SCREW DRIVER STAR Q.C. (A.O. TYPE) T8 2.7 MM	2.
2.	325.VA.2427	VA BENDING PIN FOR LCP 2.4/2.7 MM	2.
3.	304.04.24	Q.C. DRILL BIT 04" 2.4 MM	1.
4.	304.06.20	Q.C. DRILL BIT 06" 2.0 MM	2.



No.	Cat. No.	Description	Qty.
1.	428.14	DISTAL CANNULATED REAMERS (CONVEX SHAPE) 14 MM	1
2.	427.14	PROXIMAL CANNULATED REAMERS (CONCAVE) 14 MM	1
3.	428.16	DISTAL CANNULATED REAMERS (CONVEX SHAPE) 16 MM	1
4.	427.16	PROXIMAL CANNULATED REAMERS (CONCAVE) 16 MM	1
5.	428.18	DISTAL CANNULATED REAMERS (CONVEX SHAPE) 18 MM	1
6.	427.18	PROXIMAL CANNULATED REAMERS (CONCAVE) 18 MM	1
7.	428.20	DISTAL CANNULATED REAMERS (CONVEX SHAPE) 20 MM	1
8.	427.20	PROXIMAL CANNULATED REAMERS (CONCAVE) 20 MM	1
9.	428.22	DISTAL CANNULATED REAMERS (CONVEX SHAPE) 22 MM	1
10.	427.22	PROXIMAL CANNULATED REAMERS (CONCAVE) 22 MM	1
11.	325.VA.2427	VA BENDING PIN FOR LCP 2.4/2.7 MM	1
12.	425	COMPRESSION FORCEPS	1
13.	426	OPENING WEDGE MEASURING INSTRUMENT	1
14.	305.CA.18	COAXIAL DRILL SLEEVE WITH HANDLE 1.8 MM	1
15.	305.VA.18	VARIABLE ANGLE DRILL SLEEVE WITH HANDLE 1.8 MM	1



**BOX FOR VA FOOT FUSION IMPLANT & INSTRUMENT**

Cat No. : GB.065

